



## RESOURCES

### Books, Articles & Other Printed Material:

Amato, Joseph. *Servants of the Land*. Marshall, MN: Crossings Press, 1991. Print.

Amato, Joseph and Janet Timmerman ed. *At the headwaters: the 1993 Flood in Southwestern Minnesota*. Minnesota Conservation Corps/Southwest State University Flood Recovery Project, 1995. Print.

Amato, Joseph and David R. Pichaske ed. *Southwest Minnesota the Land and the People*. Marshall, MN: Crossings Press, 2000. Print.

Anfinson, Scott F. *Southwestern Minnesota Archaeology*. St. Paul: Minnesota Historical Society Press, 1997. Print.

Anderson, Gary Clayton and Alan R. Woolworth, eds. *Through Dakota Eyes: Narrative Accounts of the Minnesota Indian War of 1862*. St. Paul: Minnesota Historical Society Press, 1998. Print.

Anderson, William *The Walnut Grove Story of Laura Ingalls Wilder*. Walnut Grove: Laura Ingalls Wilder Museum. 1987. Print

Andreas, A.T. *An Illustrated Historic Atlas of the State of Minnesota*. Chicago: Lakeside Building, 1874. Web. 6 Nov 2009. <<http://www.digital.mnhs.org/>>.

Benson, David R. *Stories in Log and Stone, The Legacy of the New Deal in Minnesota State Parks*. Minnesota Department of Natural Resources, 2002. Print.

Birding Trail. *Your Guide to Great Birding Along the Minnesota River*. Audubon. 2003. Print.

Buck, Anita A. *Behind Barbed Wire: German Prisoner of War Camps in Minnesota*. St. Cloud: North Star Press, 1998. Print.

Carley, Kenneth. *The Sioux Uprising of 1862*. St. Paul: The Minnesota Historical Society, 1961. Print.

*Casey Jones Trail: A Southwest Minnesota Trail for Everyone*. Friends of the Casey Jones Trail Association, 2005. Print.

City of New Ulm. *Comprehensive Plan*, 1995. Print.

Curtiss-Wedge, Franklyn. *The History of Redwood County Minnesota*. Chicago: H.C. Cooper Jr & Co, 1916. Print.

Compiled by Mary Ann Nord, Foreword by Larry Millett. *National Register of Historic Places in Minnesota: A Guide*. St. Paul: Minnesota Historical Society Press, 2003. Print.

Conzen, Kathleen Neils. *Germans in Minnesota: The People of Minnesota*. St. Paul: Minnesota Historical Society Press, 2003. Print.

Durand, Paul. *Where the Waters Gather and the Rivers Meet: An Atlas of the Eastern Sioux*. Paul Durand, 1994. Print.

FairRidge Trail. *Fairfax*: 2005. Print.

Federal Writers' Project of the Works Progress Administration, The. *The WPA Guide to Minnesota*. St. Paul: Minnesota Historical Society Press, 1985. Print.

Fedo, Michael. *The Pocket Guide to Minnesota Place Names: The Stories Behind 1,200 Places in the North Star State*. St. Paul: Minnesota Historical Society Press, 2002. Print.

Fry, Poly. *A River Runs Through It: Cultures, Economies and Landscapes within the Minnesota River Basin to 1900*. University of Minnesota: Ph.D Program in American Studies, 1999. Print.

Fridley, Russell, Leota Kellett, and June Holmquist. *Charles E. Flandrau and the Defense of New Ulm*. New Ulm: Brown County Historical Society, 1962. Print.

Furst, Randy. "A Solemn Ride to Realize a Dream." *Star Tribune* 25 December 2005. Print.

*Guidelines for Managing and restoring Natural Plant Communities Along Trails and Waterways*. Minnesota Department of Natural Resources. St. Paul: Trails and Waterways Unit, 2000. Print.

Jarcov, Merrill E. *Like Father, Like Son: Gilfilan Story*. St. Paul : Ramsey County Historical Society, 1986. Print.

"Historic Sites of Renville County & Surrounding Areas." 2004. Print.

Hoisington, Daniel J. *A German Town: A History of New Ulm, Minnesota*. Edinborough Press, 2004. Print.

Holm, Bill. *The Heart Can Be Filled Anywhere on Earth*. Minneapolis: Milkweed Editions, 2000. Print.

Holmquist, June, ed. *They Chose Minnesota: A Survey of the State's Ethnic Groups*. St. Paul: Minnesota Historical Society, 1981. Print.

Howe, Chas. W. *Forty Wonderful Years: Morgan, Minn. & Vicinity 1876-1916*. Morgan, MN: The Morgan Messenger, 1916. Print.

Huisman, Barry. *Renville County Parks Structure and Site Inventory*. Renville County Parks, 2009. Print.

Keillor, Steven J. *Cooperative Commonwealth: Co-ops in Rural Minnesota, 1859-1939*. St. Paul: Minnesota Historical Society Press, 2000. Print.

Larson, Ralph A., *Minnesota: A Centennial History 1881-1981*. The Minnesota Mascot, 1981. Print.

Martin, Laura Belle. "Joseph Renville: Father of Renville County." Renville County Historical Society Publications: Volume #1. 1996. Print.

Meeks, Harold A. *On the Road to Yellowstone, The Yellowstone Trail and American Highways 1900-1930*. Missoula, MO: Pictorial Histories Publishing Company, 2000. Print.

Members of the Zeletic Club. *Morgan's Roots Reach 100 Years 1878-1978: A History of the City of Morgan*.

Merchant, James *Fragments of a dream*. Walnut Grove Minnesota by the Laura Ingalls Wilder Pageant Committee. Laura Ingalls Wilder Pageant 32<sup>nd</sup> Annual Production. 2009. Print.

*Minnesota River Watershed Comprehensive Recreational Guidance Document & Trail Corridor Concept Plan*. Minnesota Department of Natural Resources, 1998. Print.

*Minnesota River Basin Information Document*. Minnesota Pollution Control Agency, 1997. Print.

*Native Plant Communities & Rare Species of the Minnesota River Valley Counties*. Minnesota County Biological Survey. Division of Ecological Resources. Minnesota Department of Natural Resources. St. Paul, 2007. Print.

Nord, Mary Ann. *The National Register of Historic Places in Minnesota: A Guide*. St. Paul: Minnesota Historical Society Press, 2003. Print.

Ohman, Doug, and Mary Logue. *Courthouses of Minnesota*. St. Paul: Minnesota Historical Society Press, 2006. Print.

"Old Villages of Renville County." Renville County Historical Society. 2006. Print.

"Pioneer Days in Renville County." Olivia, MN: Olivia Times, 1913. Print

Prichard, Dorthy Dowling. *We Blazed the Trail: Motoring to Yellowstone in Mike Dowling's Oakland*. Gonvick, MN: Richards Publishing Co., 2008. Print.

Rebok, Barbara & Doug. "Renville County, Minnesota: Excerpts from Historical Writings." Tucson, AZ: A Plus Printing Company, 2000. Print.

Shannon, James P. *Catholic Colonization on the Western Frontier*. New Haven: Yale University Press, 1957. Print.

Sommer, Barbara W. *Hard Work and a Good Deal: The Civilian Conservation Corps in Minnesota*. St. Paul: Minnesota Historical Society Press, 2008. Print.

Tester, John R. *Minnesota's Natural Heritage*. University Of Minnesota, 1995. Print.

Warner, G.E., and C.M. Foote. *History of the Minnesota Valley*. Minneapolis: North Star Publishing Company, 1882. Print.

#### Data:

"Aerial Photography of Minnesota: 2008" U.S. Department of Agriculture, Farm Service Agency, 2009. <<http://www.mngeo.state.mn.us/chouse/airphoto/naip08.html>>

Audubon Minnesota. "Regions and Loops Overview." Minnesota River Valley Birding Trail, n.d. Web. 5 Jan 2010. <<http://www.birdingtrail.org/RegionsandLoopsOverview.htm>> Digitized: 1:5000.

"AutoCAD base map." City of New Ulm. 2006.

"Cultural and Ecological Assessment of the Minnesota River Valley." Great River Greening. Saint Paul, 2009.

*Dakota Commemorative March*. Dragonfly Deizgnz. Web. 2004. <<http://www.dakota-march.50megs.com/>> Digitized at 1:500.

"Directory of Minnesota Organic Farms 2008". Minnesota Department of Agriculture, 2008. Web. 2 Feb 2009. Digitized at 1:7000.

*DNR Data Deli*. Minnesota Department of Natural Resources. Web. 2004-2009. <<http://deli.dnr.state.mn.us/>>

"Lyon County GIS Data." Lyon County, MN. 2008-2009.

"Minnesota River Valley Scenic Byway". Minnesota River Valley Scenic Byway Alliance, 2000. Web. Digitized at 1:7000.

"New Ulm Development Maps." Bolton & Menk, Inc. 2006.

"New Ulm Parks Map, Street Map, and Parcel Map." Hoisington Koegler Group Inc., 2006.

"Redwood Falls AutoCAD Files." Bonestroo, Rosene, Anderlik Associates. 2005.

"The Virtual Egg Carton." *Minnesota Geological Survey*. University of Minnesota, 2005. Web. 01 Oct 2005. <[http://www.geo.umn.edu/mgs/virt\\_egg/secondpg.htm](http://www.geo.umn.edu/mgs/virt_egg/secondpg.htm)>

#### Web Sites:

"Basin Fast Facts." *Minnesota River Basin Data Center*. Minnesota State University, 2005. Web. 15 Apr 2003. <[http://mrfdc.mnsu.edu/mnbasin/fact\\_sheets/fastfacts.html](http://mrfdc.mnsu.edu/mnbasin/fact_sheets/fastfacts.html)>



## RESOURCES

*Bird Island.* Rural Computer Consultants, Inc., 2006. Web. 23 March 2010. <<http://www.birdislandcity.com/>>

*Brown County Parks System.* Brown County of Minnesota, n.d. Web. 21 June 2010.

*Buffalo Lake.* City of Buffalo Lake, 2009. Web. 23 March 2010. <<http://www.buffalolake.org/>>

*City of Cottonwood, Minnesota.* N.p., n.d. Web. 23 March 2010. <<http://www.cottonwood.govoffice2.com/>>

*City of Fairfax.* N.p., n.d. Web. 23 March 2010 <<http://fairfax.govoffice.com/>>

*City of Franklin.* N.p., n.d. Web. 23 March 2010. <<http://home.mchsi.com/~franklin/>>

*City of Redwood Falls.* "Early History of Redwood Falls." City of Redwood Falls, n.d. Web. 3 Sep 2005. <<http://www.ci.redwood-falls.mn.us/about.htm>>

*City of Wabasso Minnesota.* White Rabbit Technical Services, 2007. Web. 4 June 2010. <[www.wabasso.org](http://www.wabasso.org)>

"Community Profiles" *MNPro.com.* Department of Employment and Economic Services, 2010. Web. 6 June 2010.

*Danube.* City of Danube, n.d. Web. 23 March 2010. <<http://www.cityofdanube.com/>>

Department of Geosciences. "Rock Description Page." College of Letters and Sciences, University of Wisconsin-Milwaukee, 2003. Oct 2005. <[http://www.uwm.edu/Dept/Geosciences/Urban\\_Geology/rockdescription.html](http://www.uwm.edu/Dept/Geosciences/Urban_Geology/rockdescription.html)>

"From a Dakota Point of View." *Dakota Presence in the River Valleys.* Shakopee Mdewakanton Sioux (Dakota) Community, n.d. Web. 8 June 2007.

*Green Routes: Authentic Travel.* Green Routes, 2009. Web. 19 Jan 2009. <<http://www.greenroutes.org/>>

*Hector.* N.p., n.d. Web. 23 March 2010. <<http://hector.govoffice.com/>>

*Highwater Ethanol – Lambert, MN.* MAS Media, n.d. Web. 19 May 2010. <<http://www.highwaterethanol.com/>>

"Lamberton Minnesota Hot Iron Days". N.p., n.d. Web. 19 May 2010. <<http://www.rrcnet.org/~lambrton/iron.htm>>*Land Stewardship Project.*

*Land Stewardship Project,* 2009. Web. 9 Feb 2009. <<http://www.landstewardshipproject.org>>

*Lyon County, Minnesota.* Lyon County, 2010. Web. 2 Feb 2009. <<http://www.lyonco.org/>>

*Minneota, MN.* City of Minneota, 2009. Web. 2 Feb 2009. <<http://www.minneotamn.com/>>

*Minnesota Institute for Sustainable Agriculture.* Regents of the University of Minnesota, 2007. Web. 9 Feb 2009. <<http://www.misa.umn.edu/>>

*Minnesota's National Register Properties.* Minnesota Historical Society, 2009. Web. <http://nrhp.mnhs.org/>

"Minnesota River Prairie." Minnesota River Prairie Ecological Classification System. Minnesota Department of Natural Resources, 2005. Web. Sep 2005. <[http://www.dnr.state.mn.us/ecs/prairie/ecs\\_q.html](http://www.dnr.state.mn.us/ecs/prairie/ecs_q.html)>

*Morton, MN.* N.p., n.d. Web. 6 Nov 2009. <<http://www.mortonmn.com/>>

*Marshall, MN.* Marshall Area Chamber of Commerce, n.d. Web. 2 Feb 2009. <<http://www.marshall-mn.org/>>

*National Agriculture Statistics Service.* United States Department of Agriculture, 2009. Web. 9 Feb 2009. <<http://www.nass.usda.gov>>

National Scenic Byway. "Discovery Sites." Minnesota River Valley, n.d. Web. 3 Sep 2005. <<http://www.mnrivervalley.com>> September 2005.

*Olivia, MN.* N.p., n.d. Web. 6 Nov 2009. <<http://www.olivia.mn.us/>>

*Redwood Area Development Corporation.* NonProfitOffice.com, 2010. Web. 6 June 2010.

*Renville, MN.* N.p., n.d. Web. 6 Nov 2009. <<http://www.ci.renville.mn.us/>>

*Renville County.* N.p., n.d. Web. 6 Nov 2009. <<http://www.co.renville.mn.us/>>

*Right of Way Mapping and Monitoring.* Minnesota Department of Transportation, 2010. Web. 13 Apr 2009. <<http://www.dot.state.mn.us/maps/gisweb/row/>>

Torkelson, Steve. *City of Sacred Heart, Minnesota.* City of Sacred Heart, 2007. Web. 3 Nov 2009. <[www.sacredheartmn.net](http://www.sacredheartmn.net)>

*Tracy, Minnesota.* N.p., n.d. Web. 2 Feb 2009. <<http://tracy.govoffice.com/>>

Traffic Volumes. Minnesota Department of Transportation, 2000-2010. Web. <<http://www.dot.state.mn.us/traffic/data/html/volumes.html>>

"Wabasso Day 2010." KNUJ AM 860, 2010. Web. 4 June 2010. <<http://www.knuj.net/page/wabasso-day-2010>>

*Wabasso Area Early Childhood Initiative: Improving the Lives of our Youngest Citizens.* Minnesota Early Childhood Initiative, 2010. Web. 4 June 2010. <<http://www.wabassoareaeci.com/wabasso.htm>>

*Wabasso, MN: WPS IDD Class's Interactive Map of Wabasso, MN.* Wabasso Public School, n.d. Web. 4 June 2010. <[http://www.wabassoschool.com/map/pages/\\_main-map-test.html](http://www.wabassoschool.com/map/pages/_main-map-test.html)>

### **Presentations:**

Schoenhoff, Molly. "wokiksuye k'a wayuohinau Remembering and Honoring: Red Planting Project." Powerpoint presentation. Digital file received in April 2006.

# Renville County Trail Planning

A Coordinated Effort to Connect Our Communities

August 6th, 2009

6:30-8:00 PM  
Renville County  
Government Service Center  
Lower Level Room 117

Funding in Renville County for this project was provided by the Legislative Citizen Commission on Minnesota Resources (LCCMR), Renville County, West Central Sustainable Development Partnership, Renville County Housing and Economic Development Authority (HRA/EDA) and Olivia Kiwanis.



For more information please contact the Renville County Housing & Economic Development office (HRA/EDA) at 320-523-3656 or visit [www.renville.com](http://www.renville.com)

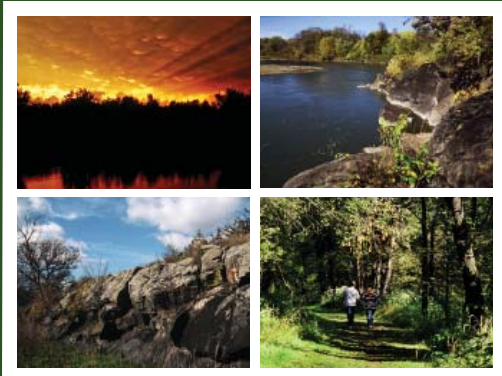


We are fortunate to have great county parks and will soon commence working with the University of Minnesota Center for Changing Landscapes to develop a trail plan for the county. A similar process is taking place in Redwood County. Once complete, the two trail plans will connect making up the Tatanka Bluffs Regional Trail Plan. As most of you already know, the FairRidge Trail that connects the community of Fairfax with Fort Ridgely State Park on the county's southeast border near the beautiful Minnesota River. In addition, meetings were held in the past to discuss the development of the Prairie View Recreation Trail initially connecting Bird Island and Olivia, then expanding west to connect to Danube, Renville and Sacred Heart, tying into the Minnesota River Valley State Trail south of Sacred Heart. From Bird Island the trail would head east to connect to Hector and Buffalo Lake, where it would head north, connecting to the Luce Line near Hutchinson. The Minnesota River Valley State Trail is designated in legislation but presently not constructed in our area. Individual communities within the county have ideas about where they would like to see trails developed in and around their community. The ultimate goal is to plan how we can connect our communities in healthy recreational ways and have fun at the same time. Last year Minnesota voters passed the "Clean Water Land and Legacy" act which created additional tax revenue to be used for parks and trail development, among other things. It is anticipated that perhaps \$42,000,000 a year for the next 25 years could be available for the development of parks and trails, so this is great timing for Renville County to develop a comprehensive trail plan.

*Do you have an interest in being part of the trail planning process?*

# Renville County Trail Planning

## A Coordinated Effort to Connect Our Communities



**Tuesday November 3rd, 2009 3PM**

Renville Community Center  
221 North Main Street Renville, MN 56284  
Danube, Renville & Sacred Heart

**Wednesday November 4th, 2009 3PM**

Athmann's Inn Restaurant  
110 South 5th Street Bird Island, MN 55310  
Bird Island, Buffalo Lake, Hector & Olivia

**Wednesday November 18th, 2009 3:30PM**

Morton City Hall  
221 West 2nd Street Morton, MN 56270  
Fairfax, Franklin & Morton



Funding in Renville County for this project was provided by the Legislative Citizen Commission on Minnesota Resources (LCCMR), Renville County, West Central Sustainable Development Partnership, Renville County Housing and Economic Development Authority (HRA/EDA) and Olivia Kiwanis.

For more information please contact the Renville County Housing & Economic Development office (HRA/EDA) at 320-523-3656 or visit [www.renville.com](http://www.renville.com)

Renville County is fortunate to have scenic county parks and natural attractions, as well as interesting historic sites. Connecting these attractions through the development of a trail system is a way to promote the health of residents and increase tourism in our communities.

For that reason, we have begun working with the University of Minnesota Center for Changing Landscapes to explore the possibilities for trail development in our county. A similar process is taking place in Redwood County. Once complete, the two trail plans will connect, making up the Tatanka Bluffs Regional Trail Plan. Individual communities within the county have ideas about where they would like to see trails developed. We want to hear those ideas!

The Minnesota River Valley State Trail is designated in legislation but presently has not been constructed in our area. Near the southeastern border of Renville County, the FairRidge Trail already connects the community of Fairfax with Fort Ridgely State Park near the Minnesota River. Plans are underway to develop a paved trail from Fort Ridgely State Park running west to Morton. At Morton, it would cross the Minnesota River, connecting to an alternative Minnesota River State Trail in Redwood County.

In the northern part of the county, meetings were held in the past to discuss the development of the Prairie View Recreation Trail. The trail would initially connect Bird Island and Olivia, and then expand west to connect to Danube, Renville and Sacred Heart. It would tie into the Minnesota River Valley State Trail south of Sacred Heart. From Bird Island the trail would head east to Hector and Buffalo Lake. From there it would head north, connecting with the popular Luce Line near Hutchinson.

Last year Minnesota voters passed the "Clean Water Land and Legacy" act which created additional tax revenue to be used for parks and trail development, among other things. It is anticipated that several million dollars a year will be available for the development of parks and trails. The development of a comprehensive trail plan will provide the framework for a successful application for "Legacy" funding to begin development of a trail system that will allow future generations of local residents and visitors to enjoy the natural beauty and history of Renville County.

*Do you have an interest in being part of the trail planning process?*

# e EAGLE EXTRA



THE KEMIS CO., FAIRFAX, MINNESOTA, U.S.A.

THURSDAY, NOVEMBER 19, 2009



## Minnesota Attorney General tells public beware of insurance scams with discounts on care and plans

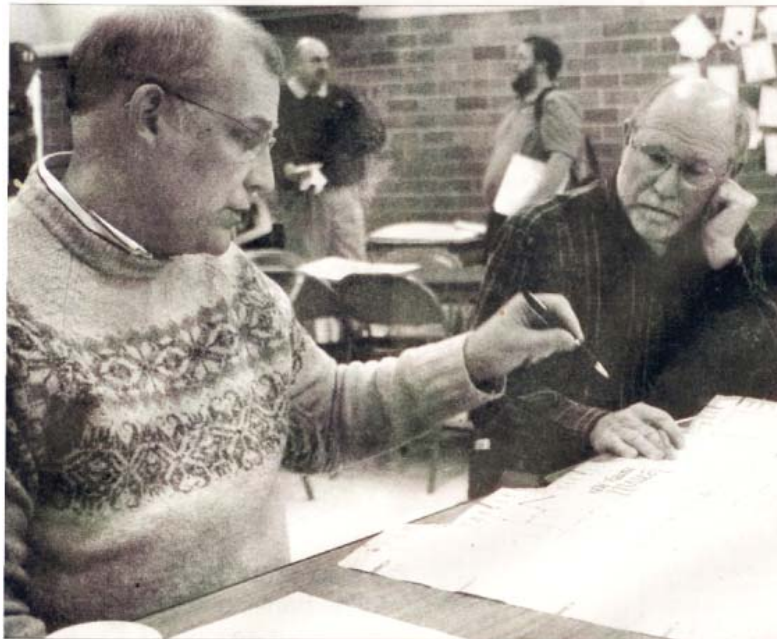
• Citizens must beware of non-insurance products from unlicensed companies that offer little benefit. **Page 11** ▶



**Public Beware:** Attorney General Lori Swanson tells public to beware of health care plans that offer great deals but come up short

COORDINATED EFFORT TO CONNECT OUR COMMUNITIES

## Renville County Trail Planning



PHOTOGRAPH & CAPTION BY K.M. SCHAFER • The Eagle Extra

**TRAIL OPINIONS** – Fairfax resident Robin Nesberg explains a trail option for the Fort Ridgely area with Minnesota DNR worker Mike Salmon of Redwood Falls at the Renville County Trail Planning meeting at the Cedar Mountain Elementary School in Franklin on Wednesday, November 18, 2009.

## Leaking pipes run high cost during season

• Underground leaking water pipes during swimming season adds to chemical and water consumption

FAIRFAX (TEE) – In its regular monthly meeting of the Fairfax City Council on Tuesday, November 10, 2009, it was disclosed that the cracked and leaking underground water pipes for the city's swimming pool cost taxpayers a considerable amount of money for the '09 swim season.

Due to winter freezing damage to the city's pool last winter, the Fairfax Utility crew performed extensive water pipe repair on the south and west pool decks in the southwest corner of the pool. The repairs were completed just in time for summer air temperatures to reach 68 degrees or warmer, which is a Minnesota state law for public facilities. The total expense for the early-summer repairs totaled an unexpected and unbudgeted amount of approximately \$40,000, of which \$22,408 is actual materials, equipment rental and services, and \$17,400 is Fairfax employee wages at the site.

The underground leaks, though proving to be elusive, were thought to be, for the most part, successfully repaired. It was soon realized that during its normal operation, the pool's water level could only be maintained by a constant replenishment of fresh water from the city's water main.

When the swimming season came to a close for the summer, the total gallons of water attributed to swimming pool use was 2,862,100 gallons. Last year in 2008, before

cal difficulty  
er each month  
hurch group

e Extra has been  
that the Fairfax  
providing what  
leading Service,  
Fairfax residents  
ad their home's

Renville County HRA/EDA  
500 East Dupue Avenue  
Olivia, MN 56277

Extra  
iving  
AWING



d by  
ness Club

iners  
een  
or the  
iving  
rawing

ge 9 ▶

ax

# Trail Planning



PHOTOGRAPH & CAPTION BY K.M. SCHAFER • The Eagle Extra  
**TRAIL OPINIONS** – Fairfax resident Robin Nesberg explains a trail option for the Fort Ridgely area with Minnesota DNR worker Mike Salmon of Redwood Falls at the Renville County Trail Planning meeting at the Cedar Mountain Elementary School in Franklin on Wednesday, November 18, 2009.

**FAIRFAX (TEE)** – Area representatives and interested parties came to the Cedar Mountain Elementary School in Franklin on Wednesday, November 18, 2009, at 5:00 p.m.

University of Minnesota Center for Changing Landscapes Co-Director Mary C. Vogel and her assistants Egle Vanagaite and Laura Detzler lead the discussion, seeking public input on possible recreational trails for Renville County.

Wednesday night's meeting included Morton, Franklin, and Fairfax. On direction of Vogel, those in attendance split into their respective groups to discuss separately the ideas for all three towns. For the better part of an hour the three tables were abuzz with ideas, concepts, and stories being exchanged.

In the end, all three town groups agreed that an extended trail heading west along the Minnesota River Valley Scenic Byway from Fort Ridgely State Park to Morton would be ideal. The trail would begin south of Fort Ridgely on Nicollet County Road 21 and continue west as that road becomes Renville County Roads 5 and 51.

All those joining in the discussions expressed the importance for any new trail development to include the concept of looping back to a starting point.

In Morton's discussion, their group thought it would be ideal to head north to Birch Cooley with a trail, then head east on County Road 2, then taking County Road 3 to Highway 19. Once there the trail could take County Road 16 back toward the trail on County Road 5.

The Franklin group discussed a similar loop traveling east toward Fairfax, and contemplated passing by the Fort Ridgely and Dale, Central Lutheran, and the Finish Churches.

The Fairfax group, already having the FairRidge Trail along Highway 4, discussed the trail development along the river valley and entertained the possibility of new trail developments to include the horse camp south of Fairfax.

The ideas that were brought up at Wednesday night's meeting were gathered by Vogel and her assistants for further study and comparison with the other town proposals in Renville County.

The Renville County Trail Planning discussions centralize on one basic theme: ideally each town would have their own internal connection to a much larger trail that would connect that town in Renville County—much like a charm bracelet. Looking at the big picture, eventually a county-wide trail would extend into the neighboring counties, where that one, too, would tie to cities and towns in their county.

With each town providing a hub—a starting or ending to a trail in loop fashion—area towns could potentially provide several days of recreation for tourists coming to the Minnesota River Valley.

"We want this area to become a destination—not just a passthrough," says local, rural Franklin resident and historian geographer Dan Fjeld. "Can you imagine if visitors spent a significant amount of time in each town that lies on a state trail? They could just keep vacationing on; they could keep on with their recreation, while at the same time constantly see something new and exciting—seeing all that we have to offer around Fort Ridgely.

during se

• Underground leaking during swimming season chemical and water co

**FAIRFAX (TEE)** – In its meeting of the Fairfax (Tuesday, November 10, closed that the cracked and ground water pipes for swimming pool cost taxpayer amount of money for the

Due to winter freezing city's pool last winter, the crew performed extensive repair on the south and west the southwest corner of repairs were completed summer air temperature degrees or warmer, which state law for public facility expense for the early-totaled an unexpected amount of approximately which \$22,408 is actualment rental and services Fairfax employee wages at

The underground leaks to be elusive, were though most part, successfully soon realized that during tion, the pool's water level maintained by a constant fresh water from the city

When the swimming close for the summer, the water attributed to swimming 2,862,100 gallons. Last year the damaging winter freeze ated for that complete 713,200 gallons used. proper working order, 700,000 gallons is considered. With the City of Fairfax prise water fund, the city eral fund \$10,892.98 to this amount, an approximate water that leaked into the while the pool was be

The water in the pool chemicals that need to be lose their potency, or in the past season, as new water on a constant basis. From the pool in proper working expense of chemicals approximately \$3,500 or mately \$5,500 the ne \$3,500 and so on. Rather near that \$5,500 range, chases totaled \$6,934, mated \$1,400 was due to ing of chemicals to ot water replenishment.

Due to the fact that its scheduled painting of floor and sides are more mulation of slippery algae directed Superintendent proceed with the appli pool liner, which will ha protectant to the concn serve as a deterrent for algae growth.

As time and schedul



Photo by Adam Hoogenakker

## Happy trails to you

Residents from Morton, Franklin and Fairfax came to the Cedar Mountain Elementary School last Wednesday in Franklin for a trail planning meeting and brainstormed possible routes where the trail could run through each of the towns. Story page B7.

*Front Page - Renville Co Register 11/26/09*

# South trail planning goes on

**By Adam Hoogenakker**  
**Staff writer**

For the third time in less than a month, residents of cities and towns in Renville County gathered together to discuss the possibilities of trails weaving their way through the towns and countryside surrounding the area.

The latest meeting, taking place last Wednesday in Franklin, drew a dozen residents to hear a presentation made by Mary Vogel and her staff from the University of Minnesota Center for Changing Landscapes. The meeting brought together folks from Morton, Franklin and Fairfax along the southern border of Renville County.

Already in place is the FairRidge Trail which connects the community of Fairfax with Fort Ridgely State Park. Plans are underway to develop a paved trail from Fort Ridgely State Park running west to Morton. At Morton, it would cross the Minnesota

River, connecting to an alternative Minnesota River State Trail in Redwood County, according to a handout at the meeting.

Similar to the meetings already held in Renville and Bird Island, the attendees were asked to break into small groups determined by what town they were from to map out a route where a possible trail could be created.

Vogel called the southern portion of Renville County a "green necklace" surrounding the Minnesota River. She then asked the three groups to brainstorm routes which passed landmarks in each town.

The following is what each group proposed to Vogel and two of her assistants – these routes are by no means final:

**Morton** – From the south, where the Morton Bridge once existed, the trail would run through town and connect to Co. Rd. 18 on the east end. The route would pass along the railroad and businesses like

Altimate Medical, the county museum and Prinzing Motors. The Birch Coulee Monuments and Lower Sioux Communities could then be connected through Morton.

**Franklin** – Running mainly to the south of Hwy. 19, the trail would run along Cty. Rd. 5/ 1st Street and travel past the Cedar Mountain Elementary School, pass through the historic downtown area and pass churches and Veterans Memorial along the way.

**Fairfax** – Using the current FairRidge Trail in the south, the trail would run north past Lions Park and pass the school. The trail would continue past Memorial Park where swimming and picnicking are available. The trail would also pass by the Depot park and museum.

For more information on the existing and proposed trails in the county, contact the Renville County HRA/EDA at (320) 523-3656 or visit [www.renville.com](http://www.renville.com).

# Renville County Trail Planning

A Coordinated Effort to Connect Our Communities



**Wednesday November 18th,  
2009 5:00PM**

Cedar Mountain Elementary School Cafeteria  
231 4th Avenue East Franklin, MN

Plans will be discussed for trails in and around  
the communities of Fairfax, Franklin & Morton



Funding in Renville County for this project was provided by the Legislative Citizen Commission on Minnesota Resources (LCCMR), Renville County, West Central Sustainable Development Partnership, Renville County Housing and Economic Development Authority (HRA/EDA) and Olivia Kiwanis.

For more information please contact the Renville County Housing & Economic Development office (HRA/EDA) at 320-523-3656 or visit [www.renville.com](http://www.renville.com)

Renville County is fortunate to have scenic county parks and natural attractions, as well as interesting historic sites. Connecting these attractions through the development of a trail system is a way to promote the health of residents and increase tourism in our communities.

For that reason, we have begun working with the University of Minnesota Center for Changing Landscapes to explore the possibilities for trail development in our county. A similar process is taking place in Redwood County. Once complete, the two trail plans will connect, making up the Tatanka Bluffs Regional Trail Plan. Individual communities within the county have ideas about where they would like to see trails developed. We want to hear those ideas!

The Minnesota River Valley State Trail is designated in legislation but presently has not been constructed in our area. Near the southeastern border of Renville County, the FairRidge Trail already connects the community of Fairfax with Fort Ridgely State Park near the Minnesota River. Plans are underway to develop a paved trail from Fort Ridgely State Park running west to Morton. At Morton, it would cross the Minnesota River, connecting to an alternative Minnesota River State Trail in Redwood County.

In the northern part of the county, meetings were held in the past to discuss the development of the Prairie View Recreation Trail. The trail would initially connect Bird Island and Olivia, and then expand west to connect to Danube, Renville and Sacred Heart. It would tie into the Minnesota River Valley State Trail south of Sacred Heart. From Bird Island the trail would head east to Hector and Buffalo Lake. From there it would head north, connecting with the popular Luce Line near Hutchinson.

Last year Minnesota voters passed the "Clean Water Land and Legacy" act which created additional tax revenue to be used for parks and trail development, among other things. It is anticipated that several million dollars a year will be available for the development of parks and trails. The development of a comprehensive trail plan will provide the framework for a successful application for "Legacy" funding to begin development of a trail system that will allow future generations of local residents and visitors to enjoy the natural beauty and history of Renville County.

*Do you have an interest in being part of the trail planning process?*

You are invited to attend this meeting our Redwood  
County Community Trail Planning!

# Tatanka Trails Community Meeting

Thursday, June 17, 2010

at the Lamberton Community Center

101 2nd Avenue

Lamberton, MN



Funding in  
Redwood  
County for  
this project  
was provided  
by the:

- LCCMR
- Redwood  
County EDA
- Monsanto  
and the  
Communities  
of:
- Lucan
- Lamberton
- Morgan
- Redwood  
Falls
- Wabasso

Mary Vogel with the Center for Changing Landscapes from  
the University of Minnesota will be presenting our  
“Connecting Communities Through Trails” next Thursday!

She has a presentation board for each community in our  
county so you will want to be sure to attend this meeting to  
hear first hand what they have designed and give feedback!

Please share this information with your interested citizens in  
your communities so we have a packed house  
for this important meeting.

For more information or to RSVP, please contact the Redwood  
County EDA/RADC office — 507-637-4004 or email:

[Julie@redwoodfalls.org](mailto:Julie@redwoodfalls.org)

by Wednesday, June 16 at 5 p.m.



## Group explores trail possibilities in Redwood area

By TROY KRAUSE

Editor

If a system of trails was developed in Redwood County, where would the best locations for those trails

be county wide?

That was the question Mary Vogel posed to a group of about 30 county residents this past Monday night in Lucan during a trails planning meeting.

Vogel, of the U of M Center for Changing Landscapes, was in the county as part of a multi-county initiative she is working on to help create trail concepts in the region. Her work is being

funded primarily through a grant from the Legislative-Citizens Commission on Minnesota Resources (LCCMR).

In order to aid residents in the planning process, Vogel

conducted significant research of the area determining everything from the landscape, to the current road systems. Then she put it all in perspective.

SEE TRAILS - PAGE 11



Mary Vogel pointed out some of the possibilities of trail development in Morgan to Morgan resident Ralph Heiling.

### TRAILS

Continued from Page 1

"This is a very heavily engineered county," said Vogel, adding the draining of prairie potholes has changed the landscape significantly.

As she looked over the county, she said in terms of the overall topography, there is not a lot to challenge bikers using potential county trails.

"The land is very flat except for in the Minnesota River Valley" she said.

Of course, that does not preclude the county from developing trails that could enhance the economy, as more people come to the area for recreation.

Vogel said in terms of Redwood County, it is similar to many other Minnesota counties in that its communities followed a railroad community development template.

The cities, she explained, are laid out on a grid based on how the rail line ran through town.

She added, the communities also dot the landscape at intervals of seven miles - the distance the train could travel before refueling and taking on more water.

Vogel, who said she is serving in an advisory role, said things such as road traffic counts and right of way issues must be considered as part of trail development.

Redwood County does have some trail development efforts already taking place, as the Casey Jones Trail has designated its route to travel through the Walnut Grove area on its way to Redwood Falls.

How it gets there, said Bruce Johnson a member of the Casey Jones Trail group and a Redwood County resident, is still up in the air.

A group has also developed a proposal to create the Chief Sleepy Eye Trail which would travel along the abandoned rail line land from Redwood Falls to Sleepy Eye. A funding request to work on the project was made in 2009 to the state.

In addition, Vogel mentioned the Minnesota River Trail designation, which also follows the Redwood County border.

It would appear part of the value of trails in the county would center around linking these major proposals together, as well as to create smaller trail loops that could connect the communities together.

As part of the Monday night meeting, those in attendance were given the chance to break down into the communities they represent to talk more specifically about the potential for trails in their towns.

Vogel essentially gave those in attendance a sky-is-the-limit opportunity to determine what would enhance their communities in terms of quality of life for local residents, as well as to improve tourism opportunities.

While much of the discussion centered around biking, Vogel said the trail concept could include any type of recreation, including motorized opportunities if that was desired.

While no funding is specifically available at this point from the state for trail development, having a plan together should funds ever become available is a good first step, said Vogel.

Vogel is going to take the information she received from the communities and will compile it with the intent of future presentations that could lead to plans relating to the what and where of trail development.

For more information on this program, contact the Redwood Area Development Corporation at (507) 637-4004.

## The future of trails in southern Minnesota

By TROY KRAUSE

Editor

How does one connect communities in close proximity to one another?

In Redwood and Renville counties, a project is in the planning stages that would create an avenue through

which that kind of connection could indeed take place.

The connections being discussed are based in the concept of trail development.

In order to help move that concept along, meetings have been held to create interest and get public input.

SEE TRAILS - PAGE 16

16 • THE REDWOOD GAZETTE

WEDNESDAY, NOVEMBER 25, 2009



Mary Vogel talks about the trail planning process at a meeting in Franklin. Joel Harmoning (right) was one of a number of Renville County residents providing input.

### TRAILS

Continued from Page 1

One of those meetings was held Nov. 18 in Franklin – hosted by Mary Vogel.

Vogel of the U of M has been working on a multi-county project funded in part by the Legislative Citizen Commission on Minnesota Resources (LCCMR).

The project is researching and putting plans together to develop a trail system that not only complements current trails and the planned trail along the Minnesota River Valley but also enhances the communities the trails connect.

Vogel said she worked on the Minnesota River Valley project for four years focus-



ing on the best way for the trails to run.

She is not using that same experience to develop a plan for Redwood, Renville, Brown and Lyon counties. The meeting held in Franklin was a brainstorming event of sorts for the public to get involved in determining the best assets and locations for future trail development in the county.

Vogel said there are some natural assets, such

as the county's parks that would be well served by a trail system. The meeting focused on the southern portion of Renville County, as Vogel already held a similar meeting along the TH212 corridor.

"There is a lot of potential in this county and this region," said Vogel, adding this is one way residents can showcase what is best about the county.

There are parts of the county not everyone knows about which could be seen by visitors on trails – allowing them to remain undisturbed. Vogel continues to host meetings in the area, adding in the future funds through the sales taxes collected could be used to make these trails a reality.

# Minnesota River Valley SCENIC BYWAY

A TOPIC OF DISCUSSION FOR MINNESOTA SENATORS



PHOTOGRAPH & CAPTION BY K.M. SCHAFER • The Eagle Extra  
Renville County Commissioner Bob Fox speaks for his district in front of a group of Minnesota senators and area mayors in Franklin on Tuesday, September 15, 2009.

## Fort Ridgely to Morton

A Renville County road and pedestrian trail project to tie neighboring cities together along the Minnesota River Valley Scenic Byway

SOLE PROJECTED USE OF STATE  
& U.S. GOVERNMENT FUNDS

### Renville County River Road & Trail Project

Land Acquisition . . . . .	\$ 150,000
Predesign . . . . .	300,000
Design . . . . .	1,900,000
Project Management . . . . .	55,000
Construction . . . . .	8,900,000
<b>TOTAL . . . . .</b>	<b>\$11,305,000</b>

- Group of Minnesota senators come to Franklin and listen for the first time to the proposed Renville County River Road & Trail Project

FRANKLIN, Minn. (TEE) – Each year a caravan of Minnesota senators spends a couple of weeks going on field trips throughout the state, listening to local area governments pitch capital projects, which would require financial help from the State of Minnesota.

On Tuesday, September 15, Minnesota senators and members of their staff gathered to the newly refurbished park shelter in the heart of Franklin to hear just such a request. On the table? The Renville County River Road & Trail Project.

The proposal was opened by Renville County Commissioner Bob Fox, who motioned with his hand above his head, “I’m switching for just a moment from my commissioner’s cap to an engineer’s cap.”

Fox went on to explain in brief the county’s plan to develop and pave Renville County Roads 5 and 51, the remaining 10.7 miles of gravel after the pavement ends from

Nicollet County Road 21, southwest of Fort Ridgely. The new pavement would reach to State Highway 19, southeast of the City of Morton.

Renville County Engineer Marlin Larson went on to explain the full depth of the project, saying the road would include curb and gutter on the hill side of the road, and include a pedestrian recreational trail, which would compliment the FairRidge Trail between Fairfax and Fort Ridgely. The road would also be brought from a 7- to 9-ton allowance to a 10-ton capability. The total projected cost of the project is \$11,300,000. Renville County is requesting for the project a total of \$4,965,000 from the State of Minnesota and \$6,640,000 from the U.S. Government.

If approved, the project would move ahead first with a historical and environmental review in the fall of 2010; preliminary design would begin in early 2011, with construction

bids being taken and approved in the fall of that same year. Construction would then begin in early 2012.

“The Minnesota River on the scenic byway is wild and wicked-nasty,” says Fairfax Mayor Schafer. “It’s always out of its banks in the springtime, and there’s no holding it in with anything short of flood walls like you’d find in Mankato. How beautiful it would be if the paved Nicollet County Road 21 would continue west with paved Renville County Roads 5 and 51. There’s a lot of nature to see along this whole entire stretch of river.”

Other significant individuals speaking at the tour in the Franklin park shelter included Minnesota Senator Gary Kubly, Fort Ridgely State Park Manager Mark Tjosaas, Renville County Economic Development Executive Director Christina Hettig, Morton Mayor Carl Cowell, and Franklin Mayor Ronald Degner.

EAGLE  
EXTRA  
9/24/09

November 12, 2008

Renville County Register

## Connecting the dots – trail planning in the county

By Adam Hoogenakker  
Staff writer

Mayors, city administrators, businesspeople and residents from Hector to Olivia gathered last Wednesday at Athmann's Inn in Bird Island to share their vision on a future trail meandering through the northern part of Renville County – a trail which could connect the towns and bring some tourists looking to escape the cities and enjoy the serenity of rural Minnesota.

Leading the discussion was Mary Vogel, senior research fellow, Department of Landscape Architecture with the University of Minnesota.

"There's a lot to learn of the county," said Vogel to more than a dozen attendants. "How do we see the trail being a part of our lives? Where will it go?"

Vogel continued by saying the county should celebrate its glacier-worn landscape and create a series of loops to connect the county's cities and towns together. During her team's research, Vogel also heard from the area tribes and felt a strategy could be created to honor their cultures, as well.

One of the major hurdles facing the trail system being laid out is Renville County's

land value, especially outside of city limits.

"You're such good farmers," Vogel said to the group, and getting farmers to give up land for the trail may be hard to do.

But within city limits, the group at Athmann's brainstormed in small groups how a trail could be implemented.

The following routes are by no means set in stone; it is a rough sketch made by each group on a city map during the meeting.

**In Hector/Buffalo Lake:** Running west-to-east north of Hwy. 212 in Hector, the trail could use a portion of the Yellowstone Trail and run past the school and through downtown where the library, community center and museum are located. The trail could connect to Buffalo Lake using Co. Rd. 8 and then turn north along Lake Allie, connecting to the Luce Line to Hutchinson.

A trail heading south on Hwy. 4 could pass the airport and connect to the Ft. Ridgely trail in Fairfax.

**In Bird Island:** Running west-to-east south of Bird Island, the trail could pass the athletic field and run past St. Mary's and the old Methodist Church, then on past the city park. The trail could travel

south of the county fairgrounds and then back north past the Bird Island Ballroom.

To connect south, the trail could connect with either Hwy. 71 or Co. Rd. 5 to reach the Birch Coulee and Beaver Falls county parks. A trail could also run along Hwy. 71 to Co. Rd. 4 to Bechyn.

**In Olivia:** A trail running from west to east along the southside of Olivia would pass Kubesh Park toward St. Aloysius, the library and Nester Park. The trail would turn towards the school then skirt the golf course before exiting the city on Co. Rd. 14.

Connecting with the rest of the county, the trail plan could run east or west on Co. Rd. 17 and turn south along Co. Rd. 1 or Hwy. 71.

The groups then left their trail ideas with Vogel, who will continue to look at possible routes in the county and within the cities along Hwy. 212 in the northern section of the county.

A meeting Tues., Nov. 3 took place in Renville covering Sacred Heart, Renville and Danube. The next trail planning meeting is scheduled for Weds., Nov. 18 at Morton City Hall at 3:30 p.m. to discuss the cities of Fairfax, Franklin and Morton.

# **Renville County Trail Planning**

A Coordinated Effort to Connect Our Communities

**Wednesday November 18th,  
2009 5:00PM**

Cedar Mountain Elementary School Cafeteria  
231 4th Avenue East Franklin, MN

Plans will be discussed for trails in and around the communities of  
Fairfax, Franklin & Morton.

**All Renville County Residents encouraged to attend!**

Contact the Renville County HRA/EDA office for more information at 320-523-3656  
or visit [www.renville.com](http://www.renville.com)